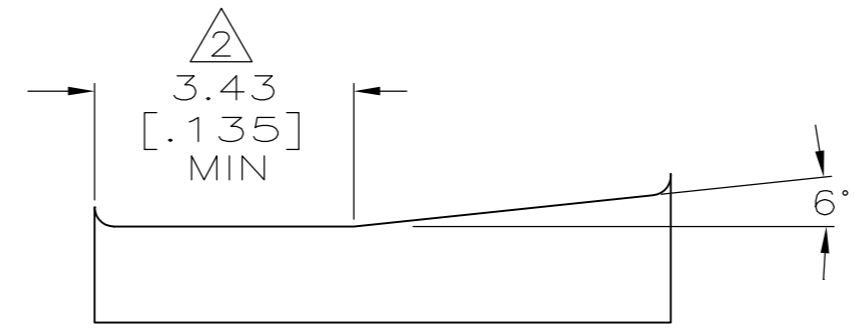
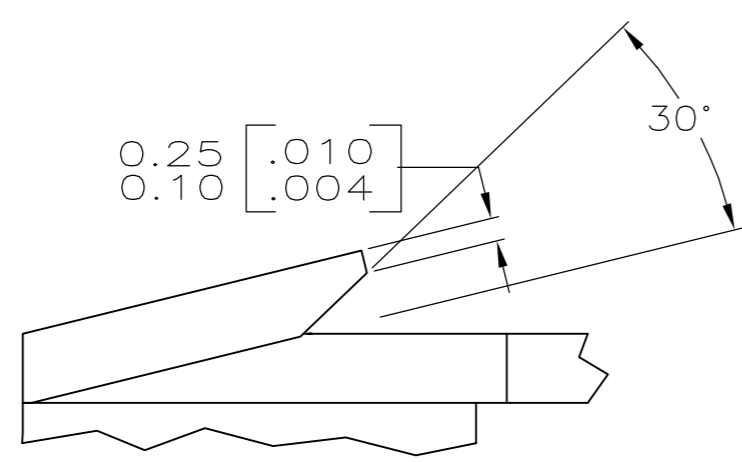
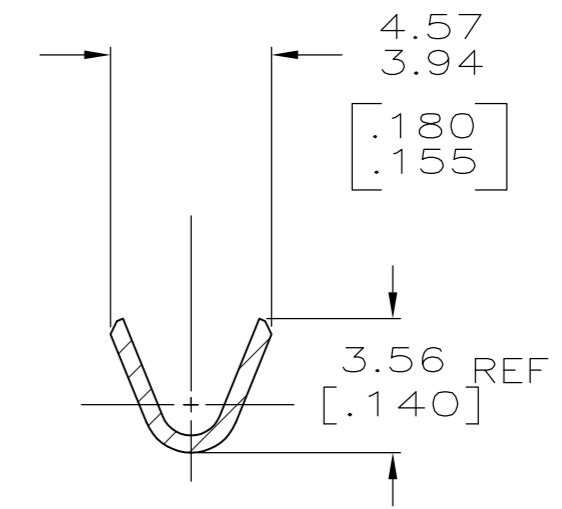
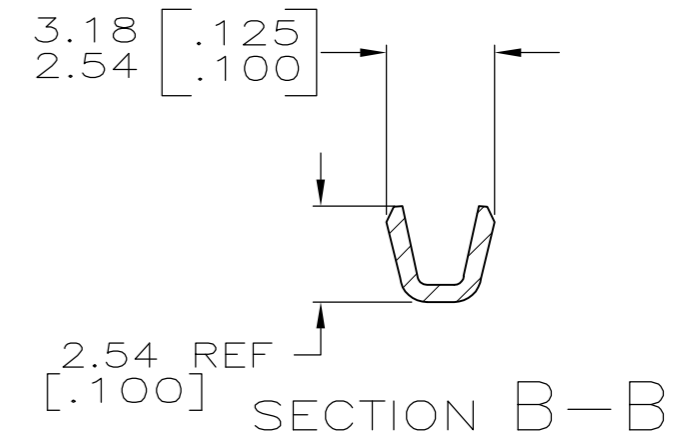
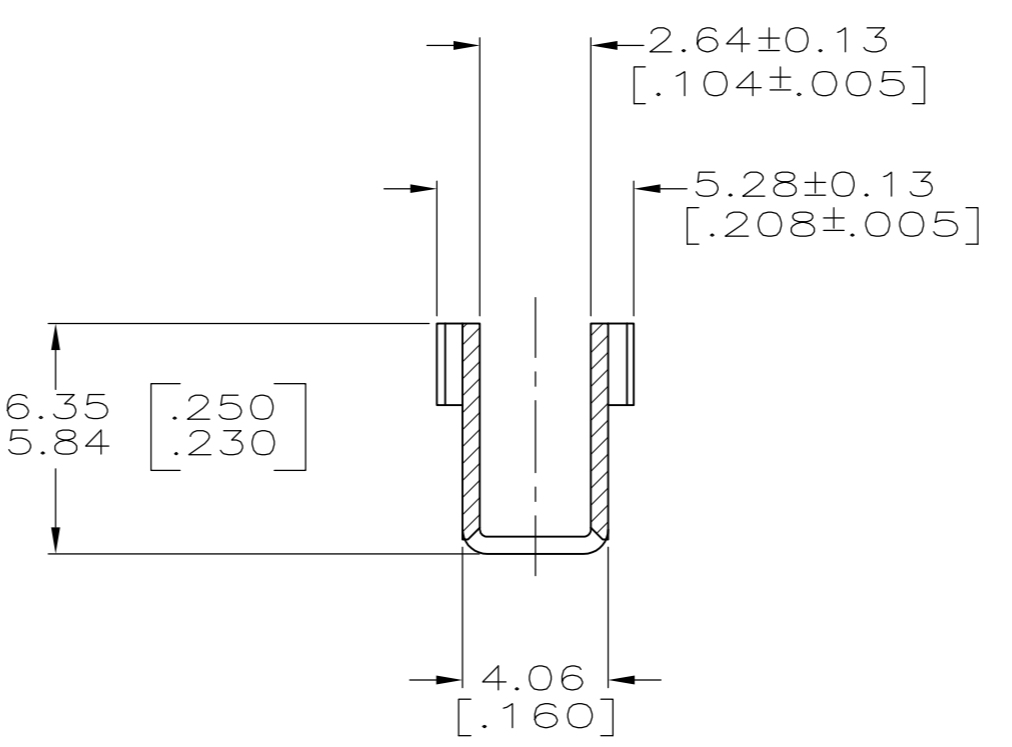
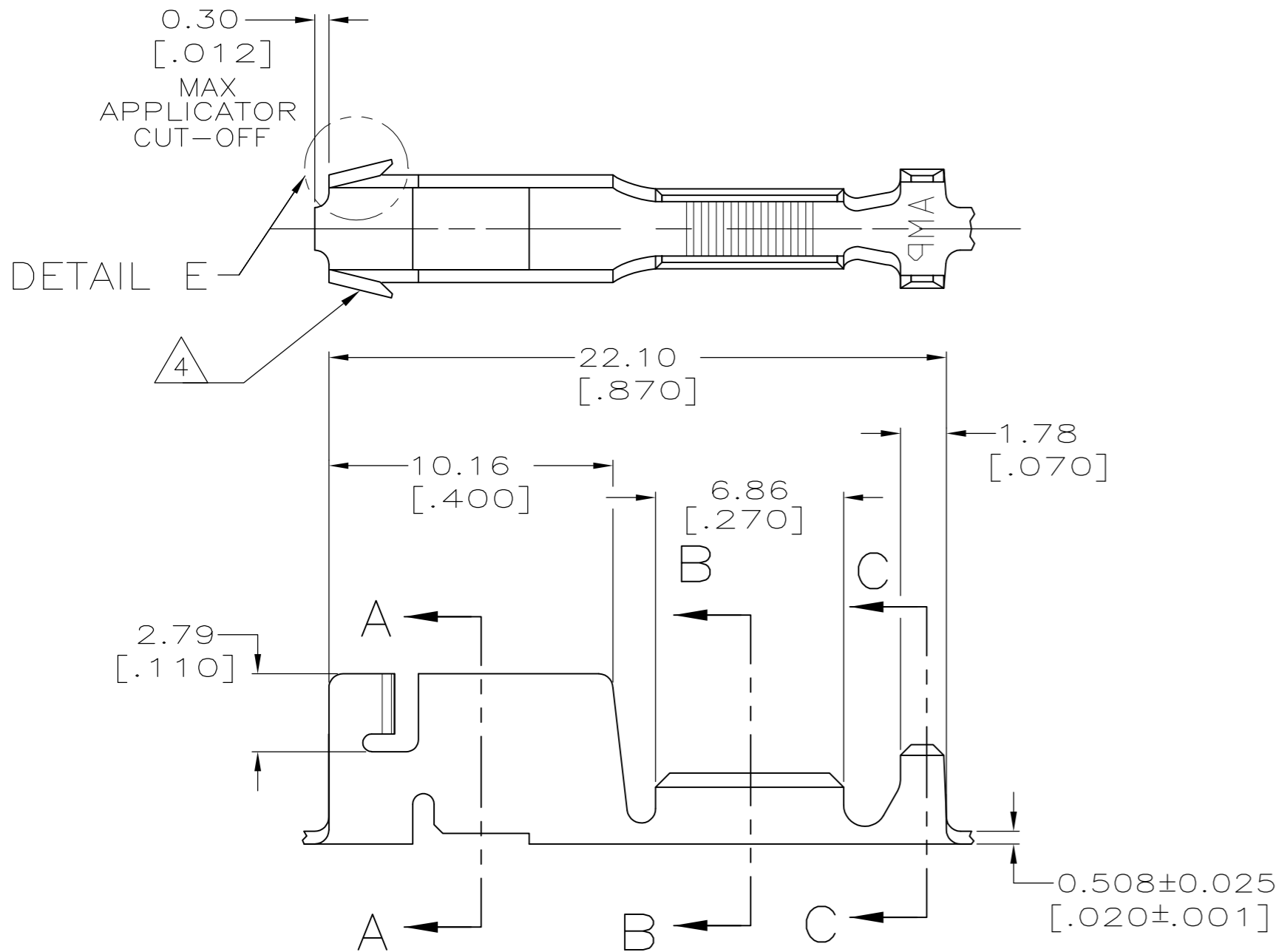


THIS DRAWING IS UNPUBLISHED. RELEASED FOR PUBLICATION
 © COPYRIGHT - By - ALL RIGHTS RESERVED.

LOC		DIST		REVISIONS			
P	LTR	DESCRIPTION		DATE	DWN	APVD	
AF	50	C1		REVISED PER ECR-13-005529	05APR13	KH	GJ



- CONTINUOUS STRIP ON REELS WITH TERMINALS LOCATED ON 23.75 [.935] CENTERS.
- MEASURE CRIMP HEIGHT IN THIS AREA.
- FORMULA TO CALCULATE CRIMP HEIGHT:

$$X = \frac{Y + 6900}{151900}$$

$$Y = \text{CMA}$$

$$X = \text{CRIMP HEIGHT}$$
- HIGH RETENTION FEATURE.

DETAIL E
SCALE 20:1

CRIMP CONFIGURATION

1.52-2.54 [.060-.100] DIA	400-1600 CMA	1217670-1
INSULATION RANGE	WIRE RANGE	PART NUMBER

THIS DRAWING IS A CONTROLLED DOCUMENT.		DWN	JR RUTH	05JAN00	 TE Connectivity			
DIMENSIONS:		CHK	PETE DESANTIS	05JAN00				
mm [INCHES]		APVD	PETE DESANTIS	05JAN00				
TOLERANCES UNLESS OTHERWISE SPECIFIED:		NAME	RECEPTACLE, CLUSTER PIN, AMPLIVAR™ 3.18[.125] DIA					
0 PLC ± -	1 PLC ± -	PRODUCT SPEC	108-2008					
2 PLC ± 0.25 [.010]	3 PLC ± -	APPLICATION SPEC	114-2019					
4 PLC ± -	ANGLES ± -	WEIGHT	-					
MATERIAL	FINISH	CUSTOMER DRAWING	SCALE	5:1	SHEET	1 of 1	REV	C1
H03 PHOSPHOR BRONZE	POST TIN		A2	00779	C=1217670			