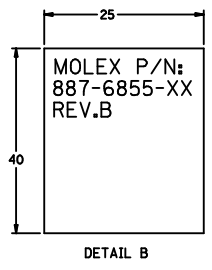
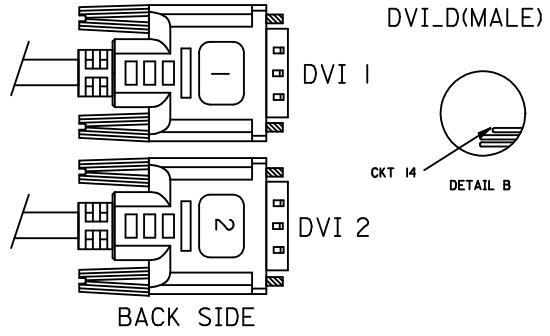
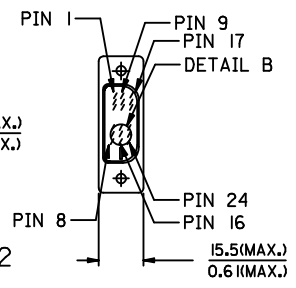
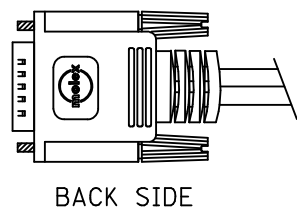
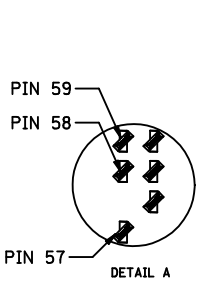
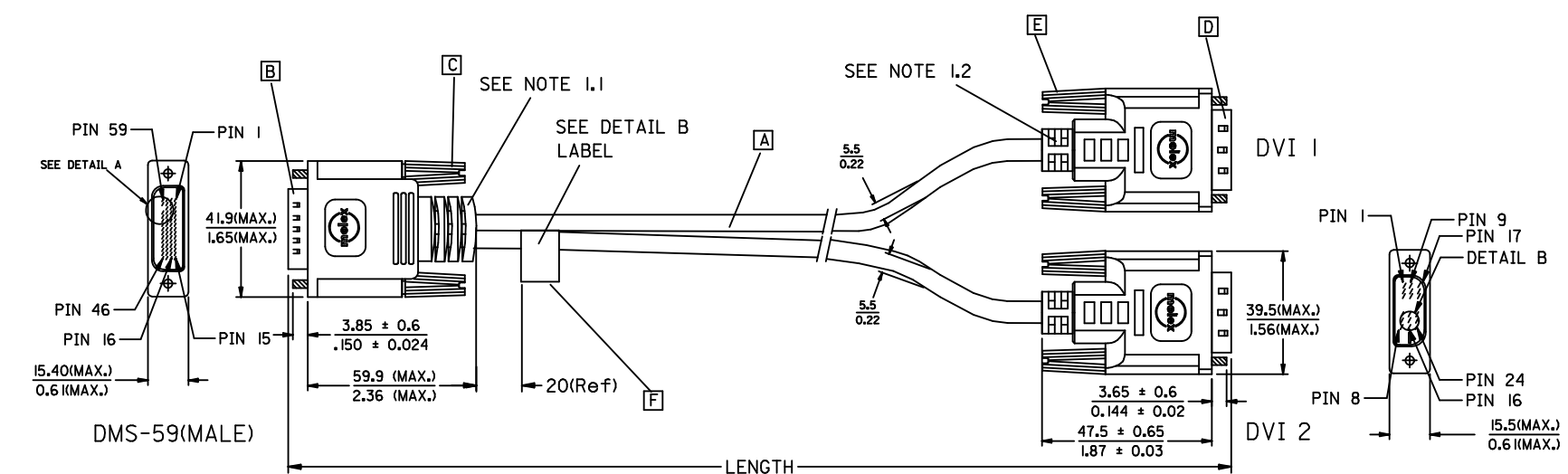


7 6 5 4 3 2 1



ENTER DESCRIPTION EC NO: DG2008-0035 DRWN: JLIU13 CHKD: BLAU APPR: BLAU 2007/11/07 2007/11/16	QUALITY SYMBOLS ▽=0 ◻=0	GENERAL TOLERANCES (UNLESS SPECIFIED)		DIMENSION STYLE MM/IN		SCALE ---	DESIGN UNITS METRIC	THIRD ANGLE PROJECTION
			mm	INCH	DRAWN BY JLIU13	DATE 2007/11/07	TITLE DMS59(M) TO TWO DVI-D(M) CABLE ASS'Y	
		4 PLACES	±---	±---	CHECKED BY BLAU	DATE 2007/11/07		
		3 PLACES	±---	±---	APPROVED BY BLAU	DATE 2007/11/07		
2 PLACES	±---	±---	MATERIAL NO. SEE TABLE A		DOCUMENT NO. SD-88744-099	SHEET NO. 1 OF 3		
1 PLACE	±---	±---	DRAFT WHERE APPLICABLE MUST REMAIN WITHIN DIMENSIONS		MOLEX INCORPORATED			
ANGULAR ±---°		THIS DRAWING CONTAINS INFORMATION THAT IS PROPRIETARY TO MOLEX INCORPORATED AND SHOULD NOT BE USED WITHOUT WRITTEN PERMISSION						

6 5 4 3 2 1

7

6

5

4

3

2

1

WIRING DIAGRAM:

SHIELD	SHIELD	GROUND
PIN 24	PIN 32	DVII_TXC-
PIN 23	PIN 31	DVII_TXC+
PIN 22	PIN 57	DVII_TXC RTN
PIN 19	PIN 33	DVII_TX0 RTN
PIN 18	PIN 29	DVII_TX0+
PIN 17	PIN 30	DVII_TX0-
PIN 16	PIN 36	DVII_HPD
PIN 15	PIN 54	SYNCS
PIN 14	PIN 5	+5V
PIN 11	PIN 34	DVII_TX1 RTN
PIN 10	PIN 27	DVII_TX1+
PIN 9	PIN 28	DVII_TX1-
PIN 7	PIN 7	DVII_SDA
PIN 6	PIN 6	DVII_SCL
PIN 3	PIN 35	DVII_TX2 RTN
PIN 2	PIN 25	DVII_TX2+
PIN 1	PIN 26	DVII_TX2-
DVI 1	DMS59	CABLE FUNCTION

SHIELD	SHIELD	GROUND
PIN 24	PIN 44	DVI2_TXC-
PIN 23	PIN 45	DVI2_TXC+
PIN 22	PIN 49	DVI2_TXC RTN
PIN 19	PIN 43	DVI2_TX0 RTN
PIN 18	PIN 16	DVI2_TX0+
PIN 17	PIN 17	DVI2_TX0-
PIN 16	PIN 40	DVI2_HPD
PIN 15	PIN 52	SYNCS
PIN 14	PIN 11	+5V
PIN 11	PIN 42	DVI2_TX1 RTN
PIN 10	PIN 18	DVI2_TX1+
PIN 9	PIN 19	DVI2_TX1-
PIN 7	PIN 9	DVI2_SDA
PIN 6	PIN 10	DVI2_SCL
PIN 3	PIN 41	DVI2_TX2 RTN
PIN 2	PIN 20	DVI2_TX2+
PIN 1	PIN 21	DVI2_TX2-
DVI 2	DMS59	CABLE FUNCTION

ENTER DESCRIPTION EC NO: DG2008-0035 DRWN: JLIU13 CHKD: BLAU APPR: BLAU 2007/11/07 2007/11/16	QUALITY SYMBOLS =0 =0	GENERAL TOLERANCES (UNLESS SPECIFIED)		DIMENSION STYLE MM/IN	SCALE ---	DESIGN UNITS METRIC	THIRD ANGLE PROJECTION	
				DRAWN BY JLIU13	DATE 2007/11/07	TITLE DMS59(M) TO TWO DVI-D(M) CABLE ASS'Y		
				CHECKED BY BLAU	DATE 2007/11/07			
				APPROVED BY BLAU	DATE 2007/11/07	MOLEX INCORPORATED		
C1	REV	DRAFT WHERE APPLICABLE MUST REMAIN WITHIN DIMENSIONS		MATERIAL NO.	DOCUMENT NO.	SHEET NO.		
				SEE TABLE A	SD-88744-099	2 OF 3		
				THIS DRAWING CONTAINS INFORMATION THAT IS PROPRIETARY TO MOLEX INCORPORATED AND SHOULD NOT BE USED WITHOUT WRITTEN PERMISSION				

6

5

4

3

2

1

NOTE:1. OVERMOLD SPECIFICATION

- 1.1 DMS59 BOOT MOLDED WITH SNOW WHITE PVC RESIN,UL 94V-0.
- 1.2 DVI BOOT MOLDED WITH SNOW WHITE PVC RESIN,UL 94V-0.

2. MECHANICAL SPECIFICATION

- ▽2.1 CABLE SHOULD STAND THE PULL FORCE 89-111N FOR 30 SECONDS WITH NO VISIBLE TERMINATION DAMAGE.
- 2.2 CABLE SHOULD PASS THE FLEX TEST IN 100 CYCLES AT EACH OF PLANES, PER EIA 364-41, CONDITION 1.

3. PRODUCT ELECTRICAL SPECIFICATION

- ▽3.1 DIELECTRIC STRENGTH: 300V DC FOR 10mS.
- ▽3.2 INSULATION RESISTANCE: 20 MEGA Ohms(MIN.).
- ▽3.3 CONTACT RESISTANCE: 2 Ohms(MAX.).
- ▽3.4 DIFFERENTIAL LINES CHARACTERISTIC IMPEDANCE: 100±7 Ohms @TDR.
- 3.5 SIGNALS CROSSTALK(FEXT): 5% (MAX.) PER ANSI/EIA-364-90.
- 3.6 SIGNALS INTRA-PAIR SKEW (PER CABLE): <150 ps.
- 4.CONNECTOR PLATING: AU FLASH PLATING.
- 5.SHORTCIRCUIT AMONG DRAIN WIRES IS ACCEPTABLE.
- 6.SCREW SPEC.:4-40 UNC.

MATERIAL LIST:

F	LABEL	I
E	DVI THUMB SCREW (4-40UNC)	4
D	DVI_D SINGLE CHANNEL G/F CONNECTOR	2
C	LFH SCREW (4-40UNC)	2
B	DMS-59 PLUG ASSY(NATURE)	1
A	DVI-D SINGLE LINK CABLE	2
ITEM	DESCRIPTION	QTY.

TABLE A

MX-P/N	DESCRIPTION	LENGTH
88768-5510	DMS59(M) TO TWO DVI-D(M) S/L CABLE 3M	3000±60
88768-5500	DMS59(M) TO TWO DVI-D(M) S/L CABLE 2M	2000±50

ENTER DESCRIPTION EC NO: DG2008-0035 DRWN: JLIU13 CHKD: BLAU APPR: BLAU	2007/11/07 2007/11/16 2007/12/07	DESCRIPTION REV	QUALITY SYMBOLS	GENERAL TOLERANCES (UNLESS SPECIFIED)	DIMENSION STYLE	SCALE	DESIGN UNITS	THIRD ANGLE PROJECTION
			▼=0 ▽=0	mm INCH 4 PLACES ± --- ± --- 3 PLACES ± --- ± --- 2 PLACES ± --- ± --- 1 PLACE ± --- ± --- ANGULAR ± ---°	MM/IN DRAWN BY DATE JLIU13 2007/11/07 CHECKED BY DATE BLAU 2007/11/07 APPROVED BY DATE BLAU 2007/11/07	---	METRIC	TITLE DMS59(M) TO TWO DVI-D(M) CABLE ASS'Y
			DRAFT WHERE APPLICABLE MUST REMAIN WITHIN DIMENSIONS	SEE TABLE A	MATERIAL NO. DOCUMENT NO. SHEET NO. MOLEX INCORPORATED SD-88744-099 3 OF 3			
			SIZE A 4	THIS DRAWING CONTAINS INFORMATION THAT IS PROPRIETARY TO MOLEX INCORPORATED AND SHOULD NOT BE USED WITHOUT WRITTEN PERMISSION				

NOTE:1. OVERMOLD SPECIFICATION

- 1.1 DMS59 BOOT MOLDED WITH SNOW WHITE PVC RESIN,UL 94V-0.
- 1.2 DVI BOOT MOLDED WITH SNOW WHITE PVC RESIN,UL 94V-0.

2. MECHANICAL SPECIFICATION

- ▽2.1 CABLE SHOULD STAND THE PULL FORCE 89-111N FOR 30 SECONDS WITH NO VISIBLE TERMINATION DAMAGE.
- 2.2 CABLE SHOULD PASS THE FLEX TEST IN 100 CYCLES AT EACH OF PLANES, PER EIA 364-41, CONDITION 1.

3. PRODUCT ELECTRICAL SPECIFICATION

- ▽3.1 DIELECTRIC STRENGTH: 300V DC FOR 10mS.
- ▽3.2 INSULATION RESISTANCE: 20 MEGA Ohms(MIN.).
- ▽3.3 CONTACT RESISTANCE: 2 Ohms(MAX.).
- ▽3.4 DIFFERENTIAL LINES CHARACTERISTIC IMPEDANCE: 100±7 Ohms @TDR.
- 3.5 SIGNALS CROSSTALK(FEXT): 5% (MAX.) PER ANSI/EIA-364-90.
- 3.6 SIGNALS INTRA-PAIR SKEW (PER CABLE): <150 ps.
- 4.CONNECTOR PLATING: AU FLASH PLATING.
- 5.SHORTCIRCUIT AMONG DRAIN WIRES IS ACCEPTABLE.
- 6.SCREW SPEC.:4-40 UNC.

MATERIAL LIST:

F	LABEL	I
E	DVI THUMB SCREW (4-40UNC)	4
D	DVI_D SINGLE CHANNEL G/F CONNECTOR	2
C	LFH SCREW (4-40UNC)	2
B	DMS-59 PLUG ASSY(NATURE)	1
A	DVI-D SINGLE LINK CABLE	2
ITEM	DESCRIPTION	QTY.

TABLE A

88768-5510	DMS59(M) TO TWO DVI-D(M) S/L CABLE 3M	3000±60
88768-5500	DMS59(M) TO TWO DVI-D(M) S/L CABLE 2M	2000±50
MX-P/N	DESCRIPTION	LENGTH

ENTER DESCRIPTION EC NO: DG2009-0015 DRWN:XMLIANG CHKD: APPR:BLAU	2008/07/23 2008/07/23 2008/07/24	DESCRIPTION REV	QUALITY SYMBOLS	GENERAL TOLERANCES (UNLESS SPECIFIED)	DIMENSION STYLE	SCALE	DESIGN UNITS	THIRD ANGLE PROJECTION
			= 0 = 0	mm INCH	MM/IN	---	METRIC	
			4 PLACES ± --- ± --- 3 PLACES ± --- ± --- 2 PLACES ± --- ± --- 1 PLACE ± --- ± --- ANGULAR ± ---°	DRAWN BY DATE JLIU13 2007/11/07 CHECKED BY DATE BLAU 2007/11/07 APPROVED BY DATE BLAU 2007/11/07	TITLE			
			DRAFT WHERE APPLICABLE MUST REMAIN WITHIN DIMENSIONS	MATERIAL NO. SEE TABLE A SIZE A 4	MOLEX INCORPORATED DOCUMENT NO. SD-88768-099 THIS DRAWING CONTAINS INFORMATION THAT IS PROPRIETARY TO MOLEX INCORPORATED AND SHOULD NOT BE USED WITHOUT WRITTEN PERMISSION	SHEET NO. 3 OF 3		