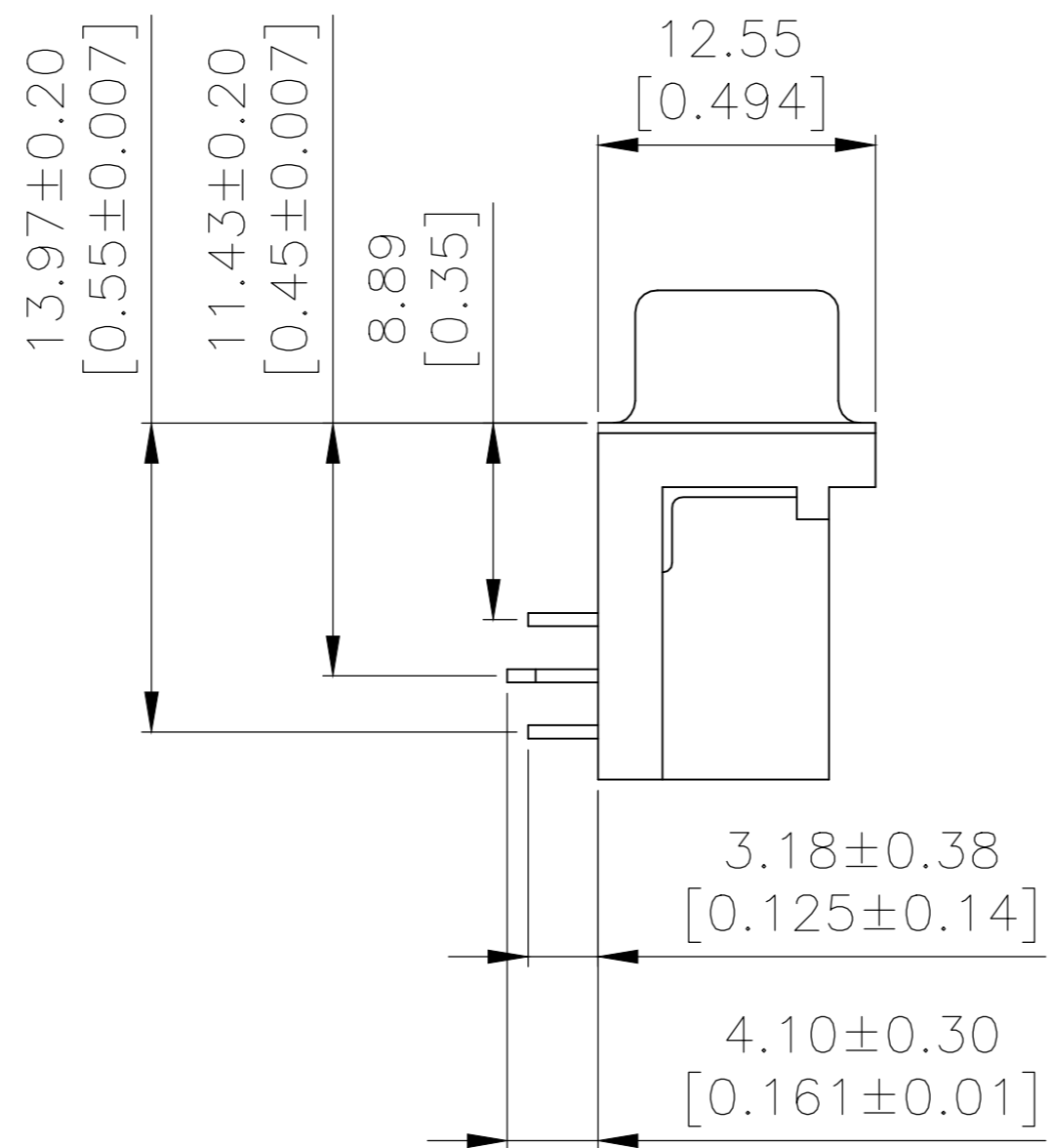
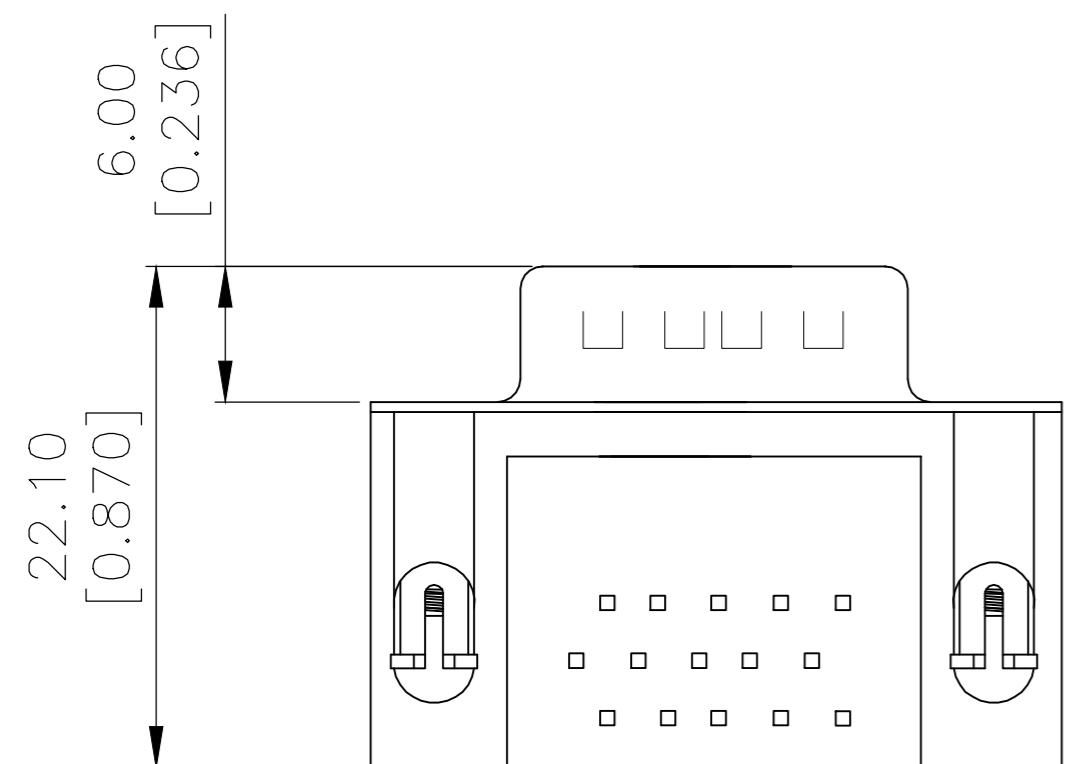
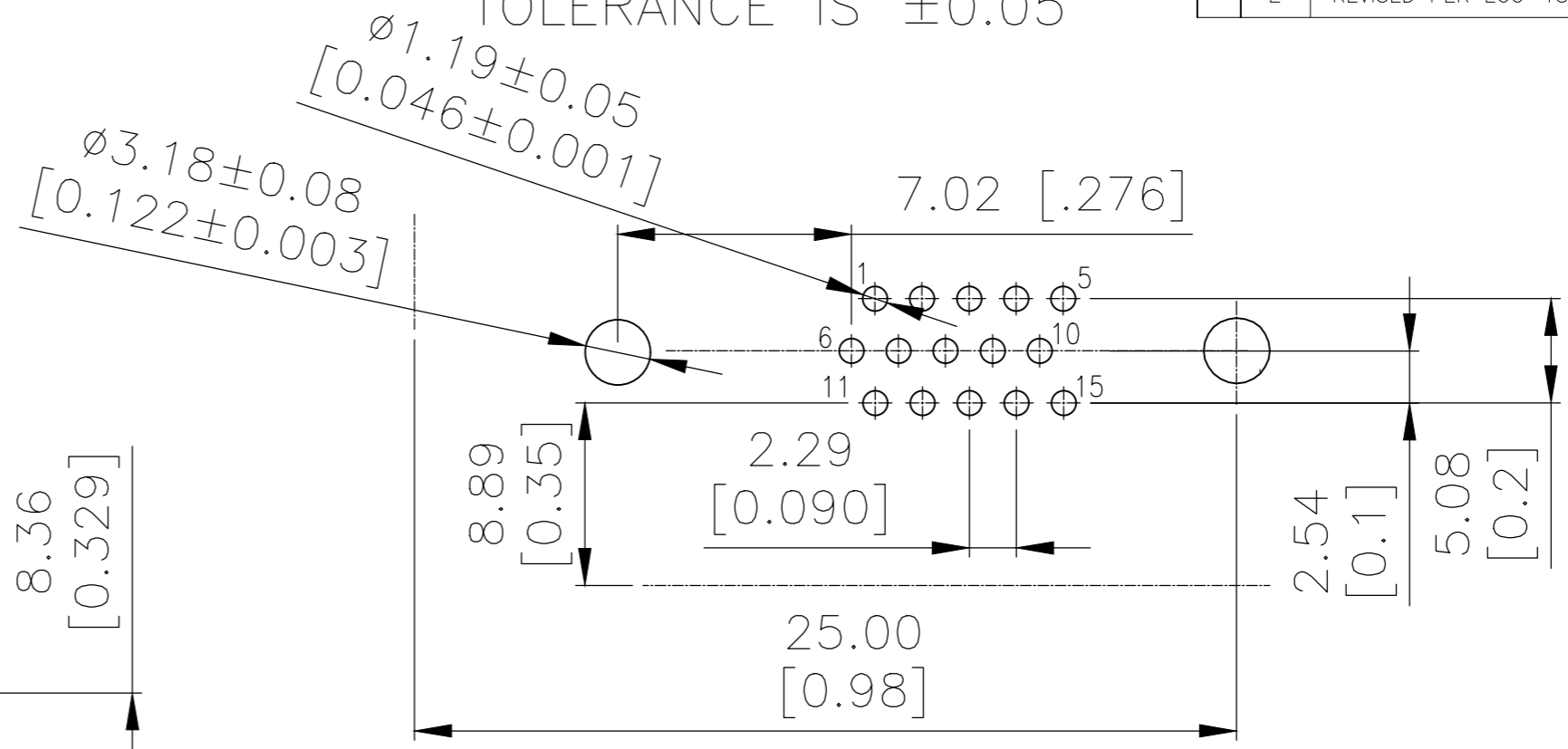
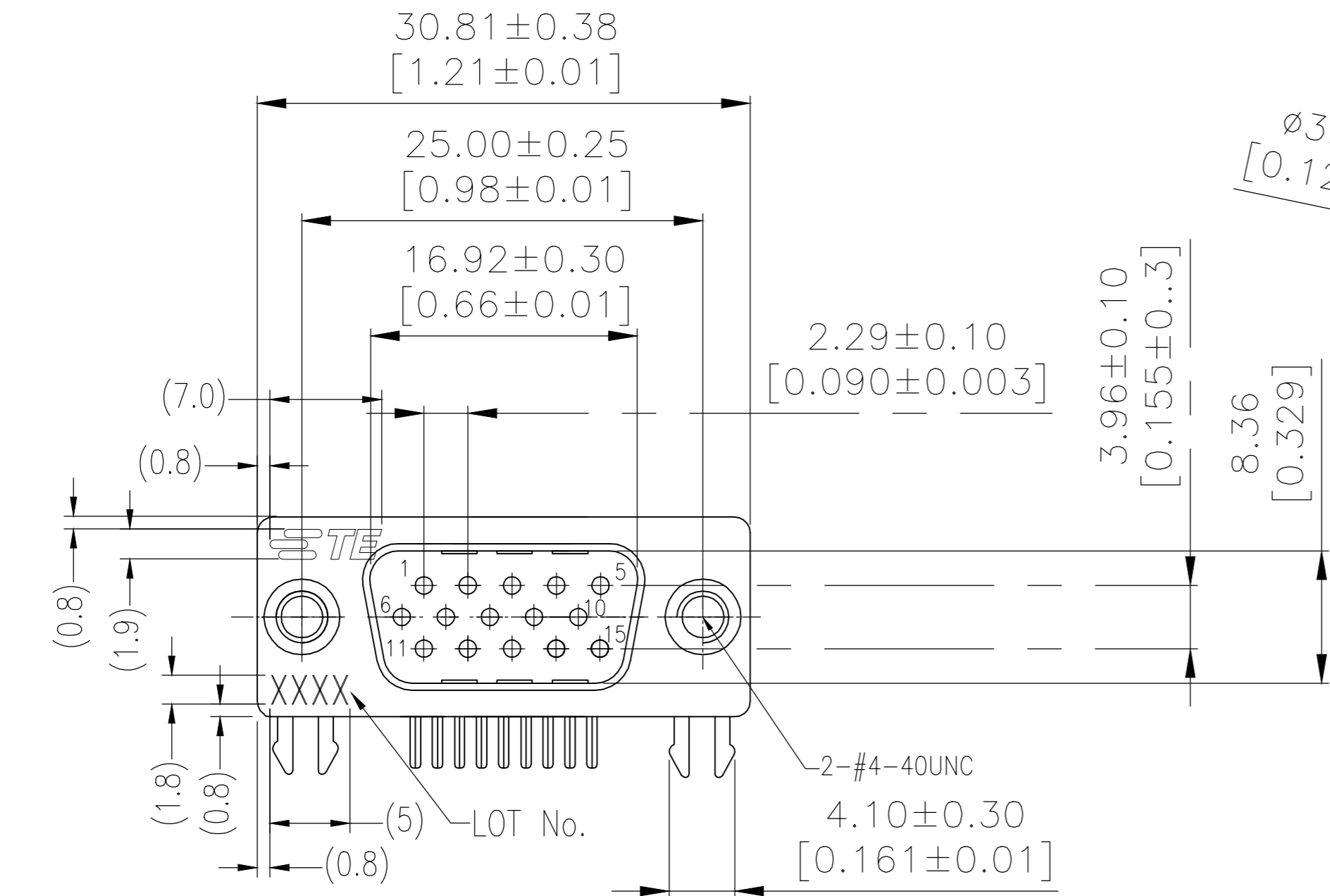


THIS DRAWING IS UNPUBLISHED. RELEASED FOR PUBLICATION
 © COPYRIGHT - By - ALL RIGHTS RESERVED.

RECOMMENDED PCB LAYOUT
 TOLERANCE IS ±0.05

REVISIONS				
P	LTR	DESCRIPTION	DATE	APVD
E		REVISED PER ECO-18-008015	24MAY2018	AP DG



NOTES:
 Housing:PBT+30%GF(UL94V-0) BLACK
 Contact:Brass
 " GOLD PLATING ON CONTACT AREA
 100u" MATTE TIN PLATING ON SOLDER TAIL
 50u" NICKEL UNDERPLATED OVERALL
 HOLDDOWN:Brass,100u" TIN OVER 50u" NICKEL
 Shell: Cold Roller Steel, Ni Plated
 Revit: Brass, Nickel Plating
 LOT NUMBER "XXXX"
 ↳ Stands For Calendar Year
 ↳ Stands For Week Number

THREADED	30μ" Au	2311774-1
-	Contact Area	P/N
	Plating	

THIS DRAWING IS A CONTROLLED DOCUMENT.		DWN AJITH PAI 09MAR2017	TE Connectivity													
DIMENSIONS: mm		CHK DANIEL GORENC 09MAR2017														
TOLERANCES UNLESS OTHERWISE SPECIFIED:		APVD DANIEL GORENC 09MAR2017	NAME AMPLIMITE PLUG, HD22, RIGHT ANGLE, 15P													
<table border="1"> <tr><td>0 PLC</td><td>± -</td></tr> <tr><td>1 PLC</td><td>± -</td></tr> <tr><td>2 PLC</td><td>± 0.25</td></tr> <tr><td>3 PLC</td><td>± -</td></tr> <tr><td>4 PLC</td><td>± -</td></tr> <tr><td>ANGLES</td><td>± -</td></tr> </table>		0 PLC	± -	1 PLC	± -	2 PLC	± 0.25	3 PLC	± -	4 PLC	± -	ANGLES	± -	PRODUCT SPEC 108-130023	SIZE A2	
0 PLC	± -															
1 PLC	± -															
2 PLC	± 0.25															
3 PLC	± -															
4 PLC	± -															
ANGLES	± -															
MATERIAL		APPLICATION SPEC	CAGE CODE 00779	DRAWING NO C=2311774												
FINISH		WEIGHT	RESTRICTED TO													
		CUSTOMER DRAWING	SCALE 1:1	SHEET 1 OF 1												
			REV E													